

Creative Arts Experience

at the Louis Pohl Gallery, 1142 Bethel St.

www.creativeartshi.com

for more information or rsvp for a MakeArt Saturday call Sandy Pohl 808 521-1812, or creativeartshi8@gmail.com

December Make-Art Saturday Schedule

1:30-3:30 pm

ARTrageous

We are all creative,
with wild imaginations and
an insatiable desire to try.
We all have a creative spark
that is our innate curiosity.

\$10 donation includes supplies
class limited to 15 participants

RELEASE YOUR INNER ARTIST!

Be willing to play and make friends.
Express your creativity in a nurturing setting.

Dec 7



Chinese Thread Book (Zhen Xian Bao) - We'll make a little book for storing your little treasures. The book structure has multiple levels of boxes that unfold as you open the book. We'll even make a belt to hold the book closed. There will be a lot of origami style folding not to worry! We'll go through each box step by step. By the time we're done you'll be so addicted, you'll want to make more of these books! Facilitated by Hope Hamada, PE, MBA (paper engineer, mini book artist).

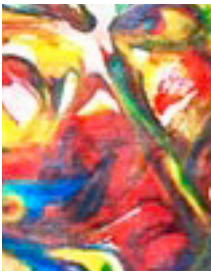
Dec 14

Learn Basic Watercolor, Talk stories about watercolor how to do learn some quick simple techniques. Facilitated by Jmmy Tablante

Dec 21

Learn Celebrate the season by making felt Holiday stockings with personality and BLING!!! All supplies are included, just bring your happy, fun and creative spirit. Facilitated by Yvonne Manipon

Dec 28



Come join us for a fun time as we make marvelous marbleized paper with shaving cream and watercolors. The easy process transfers swirly patterns onto paper. Make intricate and kaleidoscopic beauty of a marbleized design. Those ripples of color may look hand-painted or machine-stamped. Maybe you will be inspired to make your master piece into thank you or greeting cards, bookmarks or more? Make a beautiful mess.

Best weekend and after 5 pm weekday parking: municipal parking lots \$3 all day or \$.50/hour
Weekday rates: first 2 hours \$1.50 each hour after that its \$3 an hour

Chinatown Gateway entrance on Bethel St., between King and Hotel

Kukui Plaza entrance on Kukui St. behind Pali Longs

Smith Beretania entrance on Beretania below Nuuanu